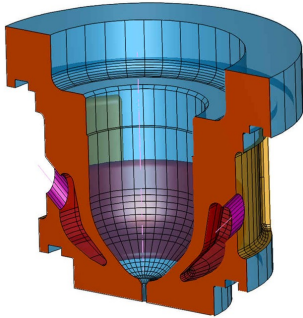




Interdisciplinary collaboration between engineering, mathematics and science

SEMS Research Highlights



SEMS ROC Status Report: Research by the Numbers!

Priya Manohar Co-Director, SEMS-ROC, RMU

This newsletter presents the research conducted within the School of Engineering, Mathematics and Science (SEMS) at Robert Morris University (RMU). It covers various relevant topics including: interdisciplinary efforts, successful research grants, student research, posters and papers, journal publications, presentations at national and international conferences, contribution to professional societies, STEM educational research, industrial consulting collaborations and applied research.

Year	# Proposals Submitted	Amount Requested (\$)	Amount Received (\$)	# Proposals Successful	# Faculty Involved	# Funding Sources Explored
2012 – 13	9 + 3 letters of intent to date	\$1,204,000 applied + \$445,000 intention to apply	\$52,000 (+ 702,000 pending)	3 (Colcom, Spectroscopic Society, MCSI, UPitt)	8: Kalevitch, Sirinterlikci, Manohar, Kerzmann, Youngblood, Hanna, Badger, Short	8: NSF, NAMII/DoD (4), Kaufman, Benedum, Colcom, Spectroscopic Society, Pitt (2), Halliburton,
2011 – 12	7	\$1,395,000	\$201,000 (+ \$127,000 pending)	4	12: Sirinterlikci, Acharya, Manohar, Wu, Lias, Ruzich, Holden, Campbell, Kalevitch, Buxton, Badger, Maurer	6: NSF (3), NAMII/DoD, Google, NIH, American Honda
2010 – 11	4	\$579,000	0	0	13: Maurer, Holden, Lias, Hanson, Sirinterlikci, Buxton, Hanna, Dress, Acharya, Wu, Manohar, Ruzich, Badger	4: NSF (2), Equitable, Dominion

- 7 out of 20 proposals successful – a very **high success rate** of 35%!
- **Received \$253,000** for research – a yield of 8.0% in dollar terms
- 16 out of 31 SEMS faculty, which is **52% of all fulltime faculty**, is actively seeking research funding.
- 7 out of 20 proposals which is 35% of the proposals have **interdisciplinary** collaborators from within RMU SEMS (science, math and engineering departments collaborate)
- 9 of 20 applications (45%) have **other (non-RMU) academic institutions** as collaborators
- 4 out of 20 applications (20%) have **industrial collaborators**
- **Government Agencies** - NSF, NAMII, DoD, NIH
- **Foundations** - American Honda, Benedum, Colcom, Kaufman, Dominion, Equitable, Google, Halliburton,
- **Industry Partners** - Bayer, Sierra, JDA, PNC bank
- **Academic Institutions** - Penn State, Pitt, Cal. U., U. Akron, CMU, Virginia State, Montana Tech., OSU, Michigan...



This is a publication of SEMS - Research and Outreach Center (ROC) which was established in 2010 by the SEMS Dean Dr. Maria Kalevitch. SEMS-ROC connects SEMS faculty and students with the region, the nation and the globe, demonstrates diversity and interdisciplinary interests of all three departments in the school. For more information on research at RMU – SEMS please contact:

Dr. Priyadarshan Manohar,
Co-Director, SEMS-ROC, Research and Grants, E-mail: manohar@rmu.edu, Tel.: 412 397 4027